



## *Waste Management Services*

Information Catalogue



# *Contents*

PANDAE BACKGROUND & HISTORY	01
WHO ARE WE	02
LEGISLATION	03
B-BBEE LEVEL 2	03
GOAL   VISION   MISSION   VALUES	04
BUSINESS MODEL	05
ON-SITE SOLUTIONS	06
NATIONAL FOOTPRINT	08
WASTE SHED DESIGN	09
VALUE ADDED PRODUCTS	10
VALUE ADDED SERVICES	12
DID YOU KNOW	16
HEAD OFFICE	17
WASTE MANAGEMENT SITE	17
NOTES	17



# PANDAE BACKGROUND & HISTORY



1



Randburg



2 - 12

1996

### Ownership:

- Pandae Storage Systems

### Business Focus:

- Motor, Mining & Manufacturing Industries

### Product Range:

- Mega Bins
- Wall Mounted Tool Cabinets
- Tool clips & Accessories
- Work Benches
- CAD Design Work

### Premises:

- Moved into Mini Factory - 500m2

### Business Focus:

- Added Healthcare Range - Hospital equipment

### Product Range:

- Specialized Storage for the Motor Industry
- Upgraded all Mercedes Benz parts departments /warehouses nationally.
- Product design for majority motor original equipment manufacturers (OEM's)
- Healthcare:
  - Disposable Hospital Curtains
  - Bedside Lockers
  - Trolleys
  - Stainless Steel Shelving
  - General Storage



Longmeadow Business Estate



12 - 25

2007



2

### Premises:

- Moved into an Industrial Warehouse - 2000m2

### Business Focus:

- Started to import Racking & Shelving - Metalsystems
- Introduced Modular Workstations into the Motor Industry
- Designed and Introduced parking mezzanine floors
- Started to export into Africa and UAE
- Appointed by Land Rover and Jaguar as an International supplier of modular workstations
- Started Pandae Green Solutions - 2014



3



Linbro Business Estate



25 - 250

2013

### Premises:

- Downscaled Warehouse - 1000m2

### Business Focus:

- Waste Management became our prominent focus.
- Storage and Workshop Equipment reduced dramatically due to Covid19

### Waste Customers:

- 300 plus



Kyalami Business Estate



250 - 460

2021



4



## CHOOSING THE RIGHT WASTE MANAGEMENT PARTNER

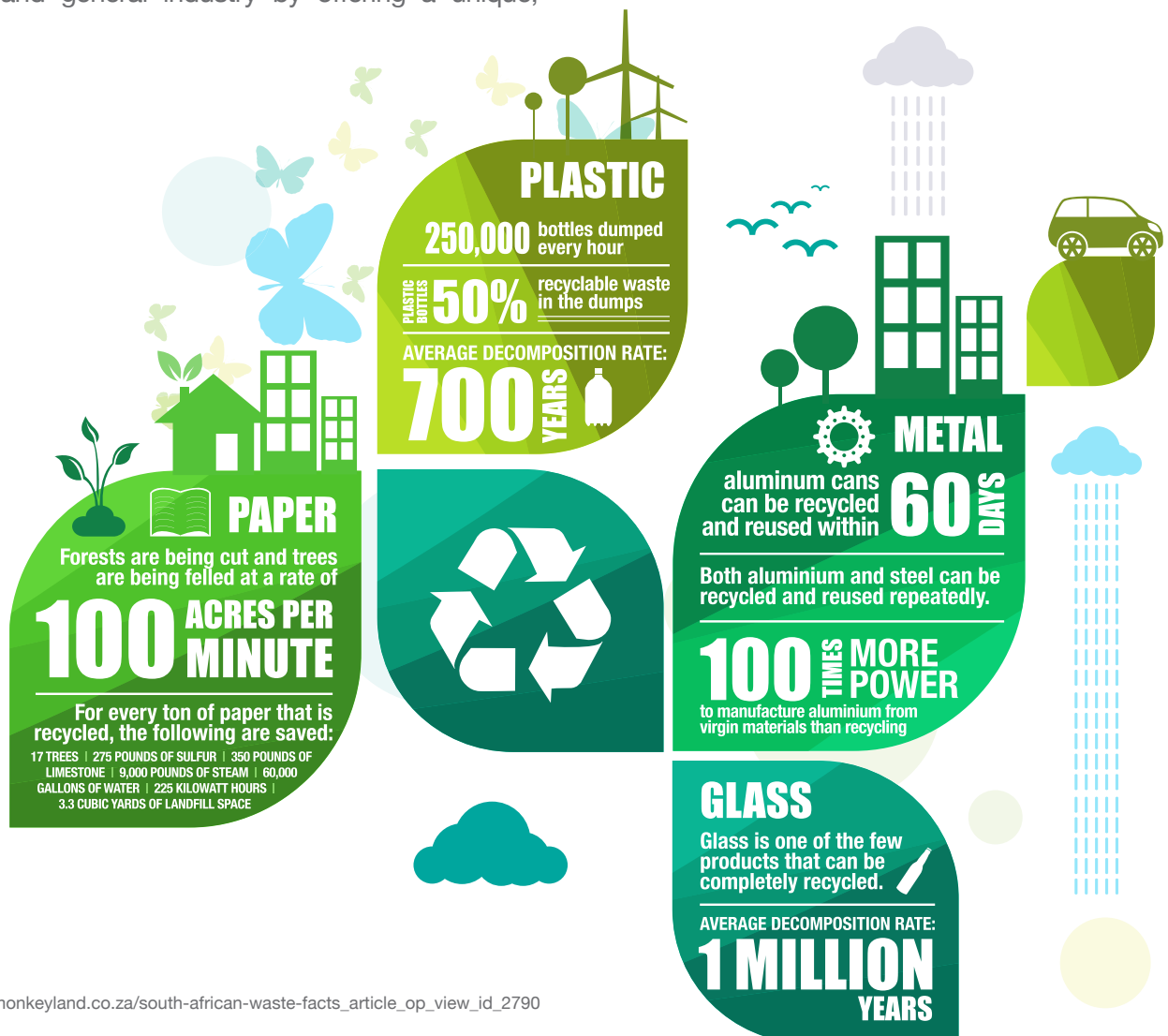
Choosing the right accredited partner can be a mine-field, is the waste getting disposed of as it should be! Disposing of waste in an environmentally-friendly manner is crucial to your business. We can help. Our experts will assess your waste streams and develop the right recycling and disposal solution for you. We'll work closely with you to customize a local recycling and waste diversion solution that cuts costs, generates revenue, safeguards health and fosters sustainability. Let's join forces and do some good in your community.

## WASTE SOLUTION

The Pandae Green Solutions (PGS) is redefining the historical methods used for the management of motor manufacturers and dealers, logistics companies, mining houses and general industry by offering a unique,

proactive waste collection service. PGS designs an optimal waste area for your business and supplies all equipment required on-site from waste stands, mini steel skips, sorting tables, bulk storage racking – to name only a few products.

PGS puts it's own trained personnel on-site to collect and sort all waste into various waste streams to be collected and disposed of by approved recyclers and waste removal companies. As part of any Service Level Agreement, PGS also provides an auditable monthly Management Report on the volumes of waste collected from all business sources, ensuring full compliance with the law. While PGS can positively assist your business to achieve the above results in a financially favourable way, we are also able to establish a substantial number of much needed jobs in South Africa. General workers will collect and sort waste on-site, while our Field Managers will ensure all standards are met on their weekly visits.



[http://www.monkeyland.co.za/south-african-waste-facts\\_article\\_op\\_view\\_id\\_2790](http://www.monkeyland.co.za/south-african-waste-facts_article_op_view_id_2790)



## COMPLIANCE TO THE LAW

With the publication of The National Waste Information Regulation of 2012 in Gazette No. 35583, which became effective on 1 January 2013, no business will be able to ‘fly under the radar’ any longer – compliance with Law will be monitored and non-compliant companies will be prosecuted.

The new Act states that all companies must apply to the Department of Environmental Affairs to be registered on the South African Waste Information System (SAWIS). All registered members will be required to report waste management information to the SAWIS on a quarterly basis, and must keep records of all waste management information submitted for a period of at least 5 years. The waste management information must include, amongst others: information on the category and a source of the waste as well as the quantities of the waste in tonnes. All information submitted to SAWIS will - where necessary - be subjected to verification.

***A person or company failing to comply with the national waste information regulations is liable on conviction to imprisonment for a period not exceeding 15 years, an appropriate fine or both a fine and imprisonment.***



Pandae Green Solution (PTY) Ltd (PGS) is a well-established Waste Management company that has developed a waste disposal and recycling solution that has the objective of completely eliminating the need to take waste to landfills. The PGS Waste Solution, which is ISO 9001, 14001 & 45001 certified, has been adopted by our clients that predominantly come from the Motor Vehicle, Manufacture, Logistic, Mining Industries, Medical and Retail Centres.

The executive management of PGS has realized that their tried and tested waste management solution must adopt the latest B-BBEE codes of good practice, and as such PGS has empowered our Black Management team and formed a Pandae Trust to take up the waste management opportunities existing in the sectors in which we currently conduct business.

The various companies have been established to be this vehicle, with the trust owning 51% of shares.

PGS and these independently registered companies subscribes to the principles of government’s National

Development Plan and understands the importance of transformation within industrial and service sectors. As such, PGS SA, PGS BA G, PGS BA KZN & PGS BA WC are all a B-BBEE Level 2 certified company with a long-term BEE strategy to ensure future compliance.

The B-BBEE status of these companies, as a service provider to our customers delivers the following distinct advantages:

- Year One - All payments can be claimed for Enterprise Development for B-BBEE scorecard
- Year Two / Three... - All payments can be claimed for Preferential Procurement for B-BBEE scorecard

The BBBEE level 2 companies will implement the same processes and protocols followed in the successful PGS SLA model. Our onsite waste management solution will be backed up by our administrative and financial programs & systems, as well as our accreditations and all IT which will flow through to ensure we meet all our client’s requirements.



### OUR GOAL



### OUR VALUES



### OUR VISION

To provide our customers with a world class on-site Waste Management Solution that supports the efforts of our customers.

### OUR MISSION

- To only work with reputable and sustainable recycling partners.
- To continue to identify and establish new and innovative programs that will add value to our customers.
- To continually train and develop our **TEAM** to adhere to industry leading standards.

### 8 FACTS ABOUT PANDAE GREEN SOLUTIONS

*We are a majority Black female owned company and we're Level 2 B-BBEE compliant.*

Partnering with us offers clients' a seamless and holistic solution for efficient waste management. Information is captured and easily available via an online portal. Sorting staff are properly trained and remunerated to comply with labour law. We also audit and assess our waste collection partners to ensure that they adhere to the highest standards in the market. All waste partners are managed on our clients' behalf.

- 1** Our Business Intelligence platform delivers accurate information and actionable data at your fingertips.
- 2** We record and report your waste - we have an online waste portal.
- 3** We are ISO 9001, ISO 14001 & ISO 45001 certified.
- 4** We are NOT in the business of moving skips to landfill.
- 5** You can use our sorters or we can train your staff – Training Academy.
- 6** We pay you your waste rebates - 30 days after month end.
- 7** We formally manage our weekly site visits by our Field Managers and send our customers a formal weekly report of the activity that took place.
- 8** We have a comprehensive OHS file - issued per site.



## OVERALL PROPOSITION: ON-SITE WASTE MANAGEMENT SOLUTION

### Management Fee

- Business Intelligence platform delivers accurate information and actionable data at your fingertips.
- Manage and Record Waste Management meetings
- Field Manager - Weekly Management Report
- Waste Training Academy for all sorters and supervisors
- SHEQ Officer Audits
- ISO Certification 9001, 14001 & 45001
- Stationery & Digitisation
- All waste partner's licenses are verified and service level agreement with all our major partners

### On-Site Operations

- Labour
- On-site collection of waste
- Sorting of waste streams
- Sending off of various waste streams
- PPE & PPC
- HR

### Waste Administration

- Pandae monitors every service, completed every day.
- Sorter places waste collection directly with specified waste partner via App.
- Admin Assistant follows up each collection not collected in agreed time frames (Portal)
- Pandae and transporter/waste partner's digital collection notes are uploaded onto portal in real time.
- Admin Assistant captures weigh bridge and manifest certification.
- Debtor and credit assistant - pay waste partners where necessary and collect rebates
- Financial Manager - pays rebates and manages financial department
- Admin Manager manages administrative assistants and oversees daily collections, and all administrative tasks are completed
- Records are kept for 5 years

## CERTIFICATIONS



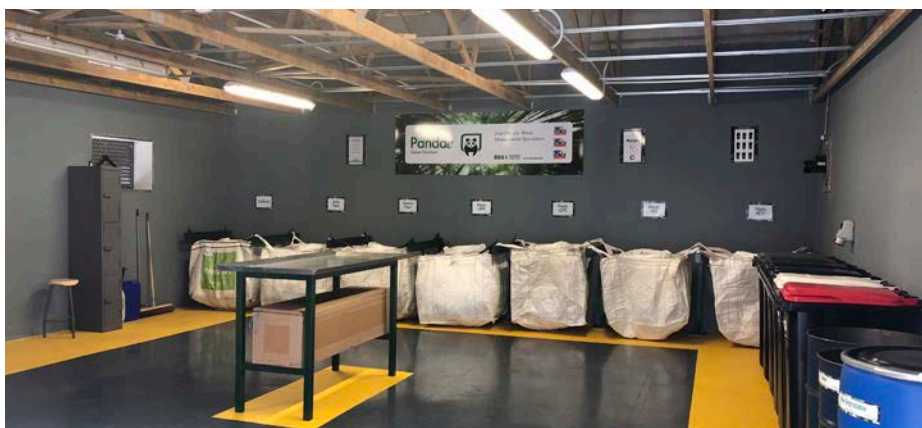


## LIST OF MINIMUM EQUIPMENT ISSUED TO STAFF ON-SITE

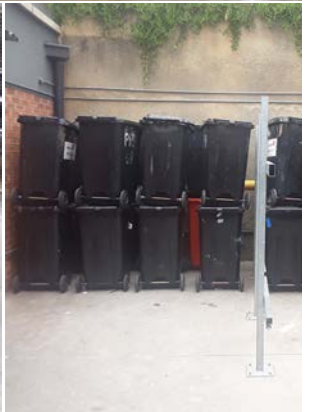
- Uniforms
- Reflector Bib
- Safety PVC Sleeves
- Gloves
- Dust Mask
- Pair Safety Shoes
- T-Shirts

Equipment
Bag Stand Arm
Bag Collection Recycling Partner
Fluorescent Tube Waste Storage
Workbench Sorting 1000Hx1800Wx800D
Stool Sorter - 490mm
Locker 3 Tier Lockable
Padlock - 20mm
Bin Wet Waste 220L Openhead Screw Lid
Drum Steel 210L Non-Lockable
Bin Wheelie Black + Black Lid 240L
Bin Wheelie Black + Red Lid 240L
Bin Wheelie Black + Dark Green Lid 240L
Bin Wheelie Black + White Lid 240L
Bin Wheelie Black + Grey Lid 240L
Bag Stand T-Leg Support
Pallet Jack 2.5ton Nylon

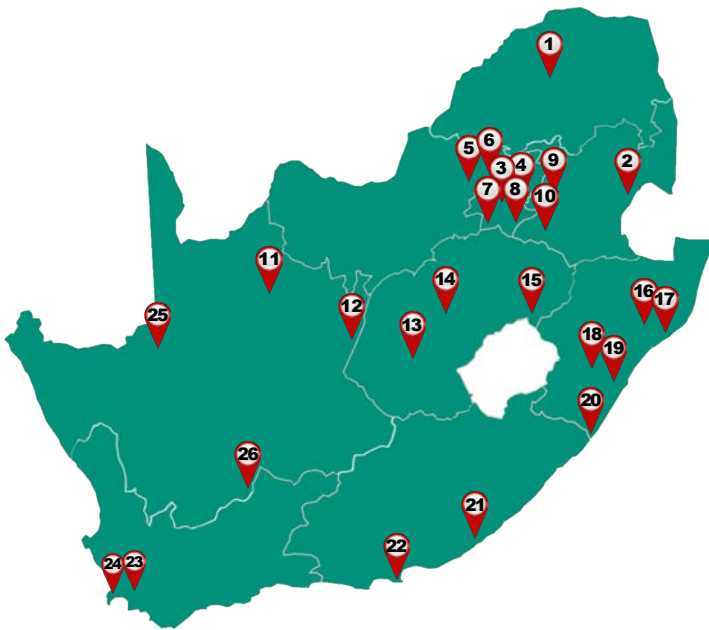
Sundries
Cleaner AC44 Degreasing Solution
50 L Black bin
Plastic Builders Bucket
Mop head with aluminium handle
Non woven microfibre cloth
Household broom
Platform hard broom 450mm
Platform hard broom 600mm
Cherry scrubbing brush- plastic black
Polish Nugget Black 50ml
Polish Shoe Brush
Book Collection A5 4 Part 50 Set
Stationery Kit
Cellphone
Cellphone Data Charge
SHEQ File
Sign Large Green Solution 800Hx2500W
Sign A1 Poster - Pack of 2 Posters
Sign A4 Poster (Wall)
Fixed Structure Nail M6x55mm Hilti
Sign ABS Emergency Contact A5 Landscape
Sign A2 Poster Frame - Sorters Schedule
Sign Sticker (Wheelie Bins) 270x70mm
Book Training A4 S/Bound P/traic Cust. Copy







# NATIONAL FOOTPRINT



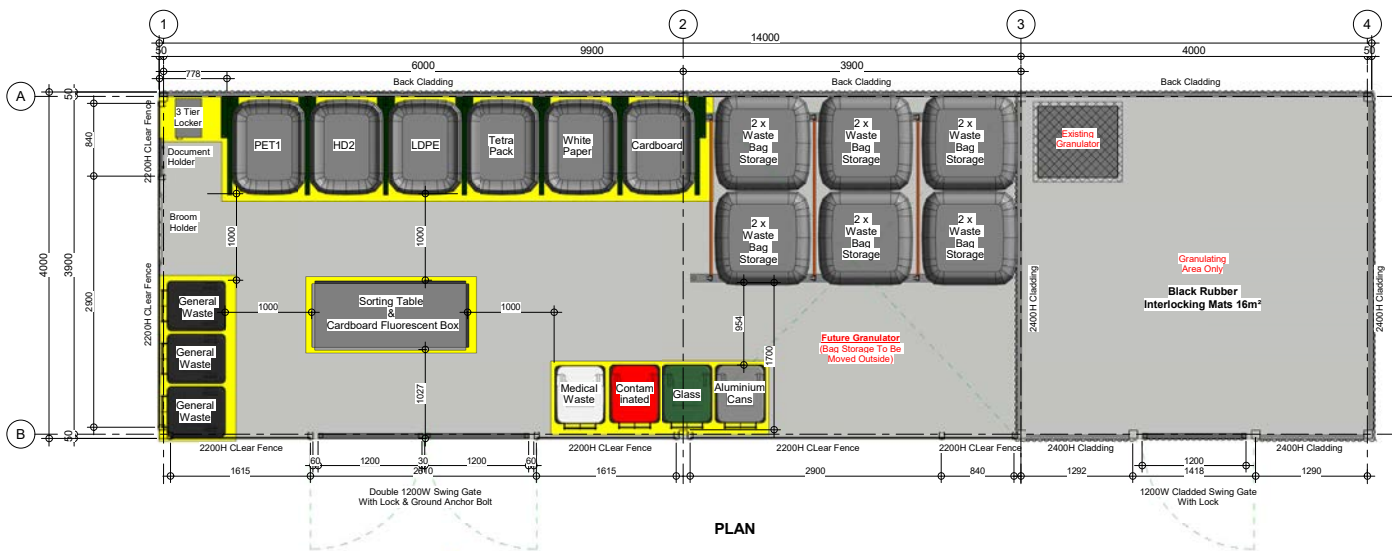
- |                  |                      |
|------------------|----------------------|
| 1. Mokopane      | 2. Nelspruit         |
| 3. Johannesburg  | 4. Pretoria          |
| 5. Rustenburg    | 6. Brits             |
| 7. Vereeniging   | 8. Heidelberg        |
| 9. Middelburg    | 10. Witbank          |
| 11. Kathu        | 12. Kimberley        |
| 13. Bloemfontein | 14. Welkom           |
| 15. Harrismith   | 16. Empangeni        |
| 17. Richards Bay | 18. Pietermaritzburg |
| 19. Durban       | 20. Port Shepstone   |
| 21. East London  | 22. Port Elizabeth   |
| 23. Stellenbosch | 24. Cape Town        |
| 25. Uppington    | 26. Beaufort West    |

## SOME OF OUR CLIENTS





# WASTE SHED DESIGN



## 14m x 4m Shed - 56m<sup>2</sup>

Brick Pave Flooring Existing, Rubber Interlocking Mats required 16m<sup>2</sup>  
 Fencing Required, Roof Required, Paint Required, Yellow Floor Paint 13m<sup>2</sup> Grey Floor Paint 43m<sup>2</sup>



Wheelie Bin  
(Assorted Colours)  
240 Ltr



Bag Stands &  
Bag Arms



Bag Storage Rack Support  
1500D x 1800W x 2100H



3 Tier Locker  
450mmD x 300mmW x  
1800mmH



Sorting Table  
800mmW x 1800mmD



Fluorescent  
Reinforced Cardboard Box  
330mmD x 1640mmW x 330mmH



Document Holder  
Perfo Beam  
20D x 450W x 80H  
2 Levels  
with Clips



Sanitizer Backpack  
Sprayer  
15 Ltr



Wall Mounted Broom  
Holder

# VALUE ADDED PRODUCTS



*Diamond Arrow Award 2019, 2020, 2020 and 2021 - 1<sup>st</sup> place for Outstanding Waste Management Equipment*



SPILL KIT



COVID 19 BINS



INDUSTRIAL SCALES



HUSQVARNA 15 LITRE BACKPACK SPRAYER

WASTE COLLECTION BINS



WHEELIE BINS

 **VALUE ADDED PRODUCTS**



OFFICE BINS



PLATFORM TROLLEY  
*Heavy Duty*

ANTI-FREEZE & BRAKE  
FLUID WASTE DRUM



LOCKABLE DRUM



PLATFORM TROLLEY  
*Light Duty*



SORTING TABLE



VICE  
150mm



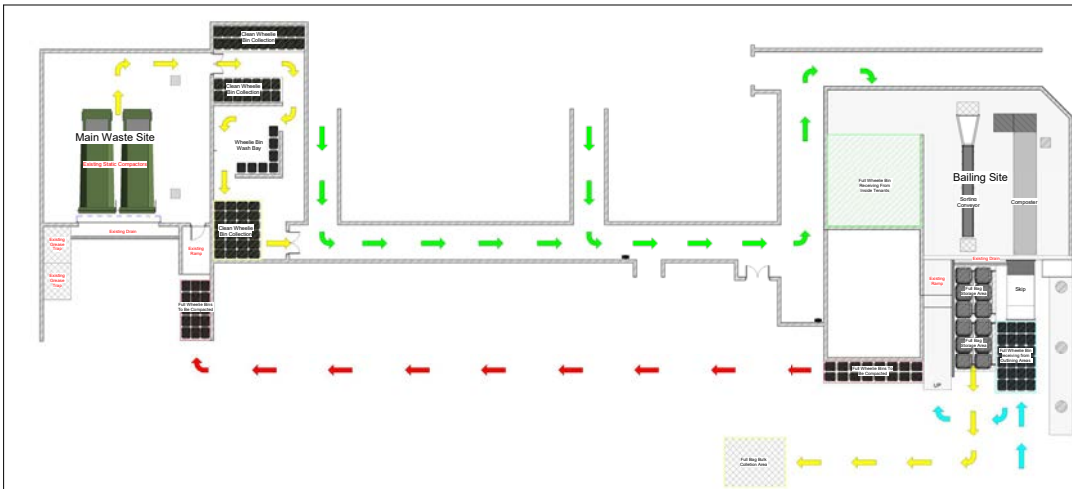
VICE STAND

LOCKER 3 TIER LOCKABLE



BAG STAND





PLAN



PERSPECTIVE



PERSPECTIVE

THIS DRAWING IS THE PROPERTY OF PGS SA AND MAY NOT BE COPIED OR DISTRIBUTED WITHOUT THEIR WRITTEN CONSENT.



www.pandae.biz

17 Indrapoole,  
Kyalami Business Park,  
Midrand, Johannesburg  
Tel: (011) 858 4441

No.	Description	Date

**Montecasino  
Bailing  
Waste Site**

**Bailing Site To  
Main Waste Site**

Project num: PAN MBWS 2553 21

Date: 03/12/2021

Drawn by: KW

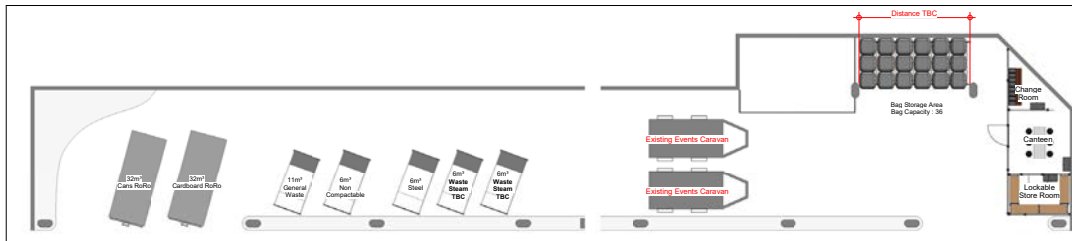
Checked by: KB

Sales Person: KB

**A101**

Scale: 1 : 100

2020/07/13 16:48:16



SKIP PLAN

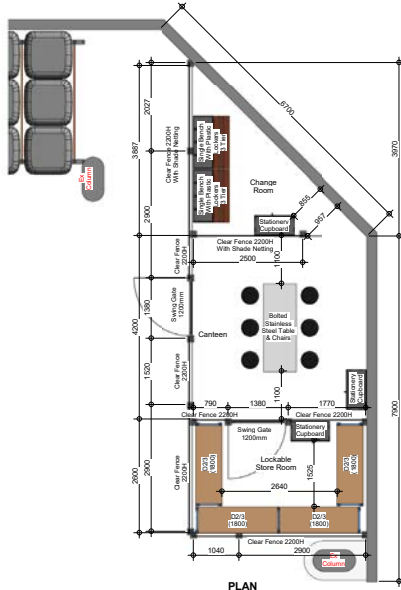


PERSPECTIVE



PERSPECTIVE

THIS DRAWING IS THE PROPERTY OF PGS SA AND MAY NOT BE COPIED OR DISTRIBUTED WITHOUT THEIR WRITTEN CONSENT.



PLAN



www.pandae.biz

17 Indrapoole,  
Kyalami Business Park,  
Midrand, Johannesburg  
Tel: (011) 858 4441

No.	Description	Date

**Montecasino  
Basement  
Waste Site**

**Plan & Profile**

Project num: PAN MBWS 2552 21

Date: 03/12/2021

Drawn by: KW

Checked by: KB

Sales Person: KB

**A101**

Scale: As indicated

2020/07/13 16:48:16

WASTE AREA AND PROCESS FLOW DESIGN



**HAZARDOUS WASTE DISPOSAL**



**FLUORESCENT TUBE RECYCLING**



**SOIL REHABILITATION**



**MEDICAL WASTE DISPOSAL**



**REDUNDANT STOCK DISPOSAL**



**PEST CONTROL**



**SHEQ (SAFETY, HEALTH, ENVIRONMENTAL & QUALITY) CONSULTATION SERVICES**



**E-WASTE: ASSETS VALUE RECOVERY**



**ENTERPRISE DEVELOPMENT PARTNERSHIP**





CERTIFIED DESTRUCTION



COVID19 DISPOSAL PRODUCTS



SHREDDING



FOOD WASTE COMPOSTING

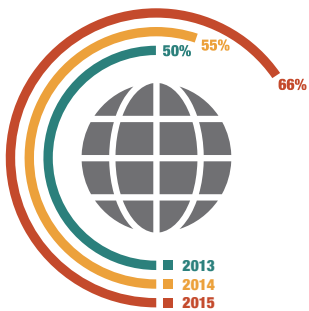



SLUDGE REMOVAL

## DID YOU KNOW?

# 66% OF CONSUMERS

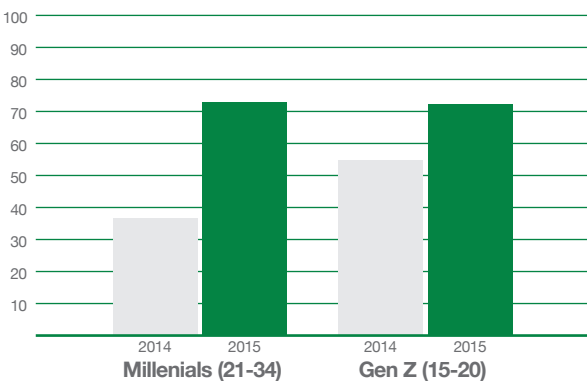
are willing to pay more for sustainable goods, Nielsen report reveals



66% of survey respondents are willing to pay more for sustainable goods, up from 55% in 2014, and 50% in 2013

Sales of consumer goods from brands with a demonstrated commitment to sustainability have grown more than 4% globally, while those without grew less than 1%.

Millennials are the most willing to pay extra for sustainable offerings—almost three-out-of-four respondents (73%), up from approximately half in 2014. Commitment to the environment has the power to sway product purchase for 45% of consumers surveyed



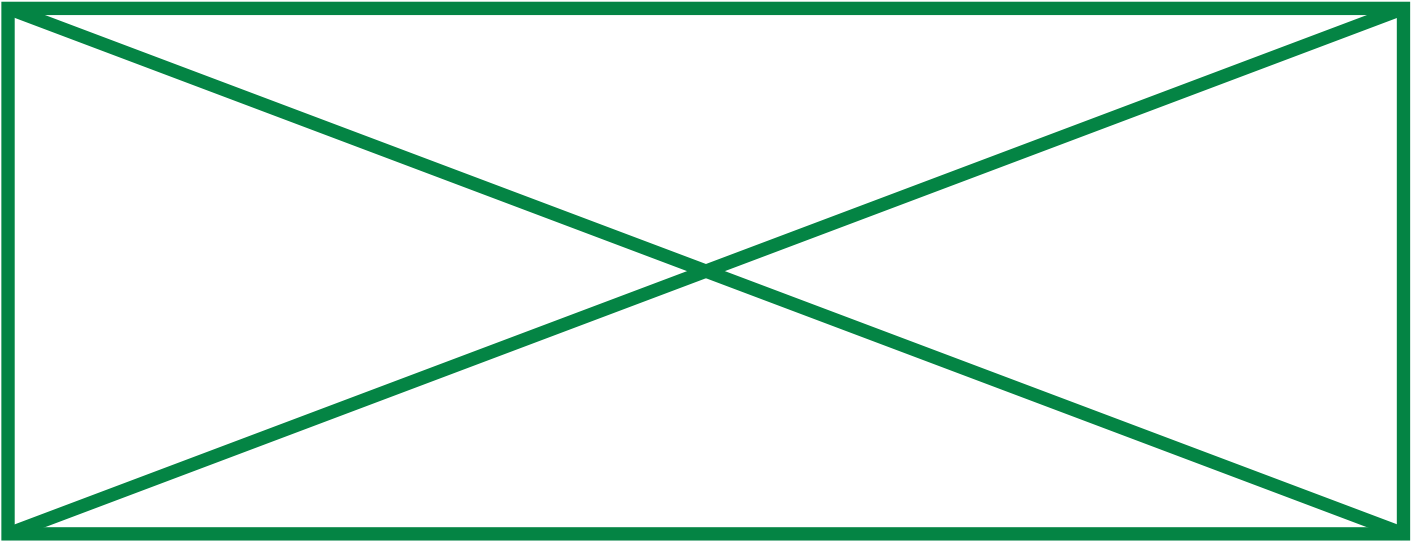
*Despite the fact that Millennials are coming of age in one of the most difficult economic climates in the past 100 years, they continue to be most willing to pay extra for sustainable offerings—almost three-out-of-four respondents (73%) in the latest findings, up from approximately half in 2014.*

*The rise in the percentage of respondents under 20, also known as Generation Z, who are willing to pay more was equally strong—from 55% of total respondents in 2014 to 72% in 2015.*

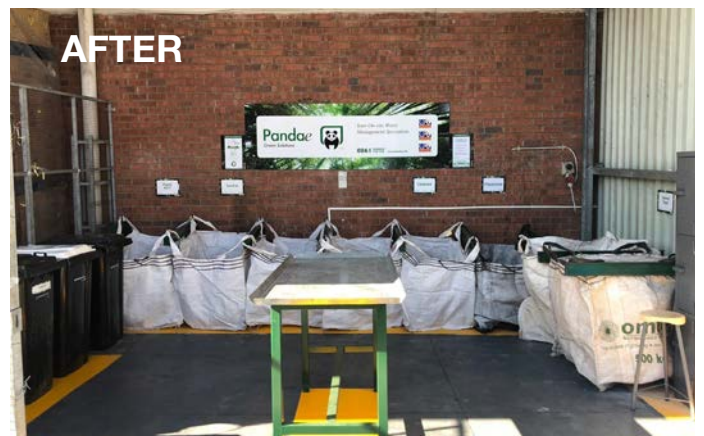
## ABOUT THE GLOBAL SURVEY

The Nielsen Global Survey of Corporate Social Responsibility and Sustainability was conducted between February 23 - March 13, 2015, and polled more than 30,000 consumers in 60 countries throughout Asia-Pacific, Europe, Latin America, the Middle East, Africa, and North America.

# HEAD OFFICE



# WASTE MANAGEMENT SITE



## NOTES:

---

---

---

---

---

---

---

