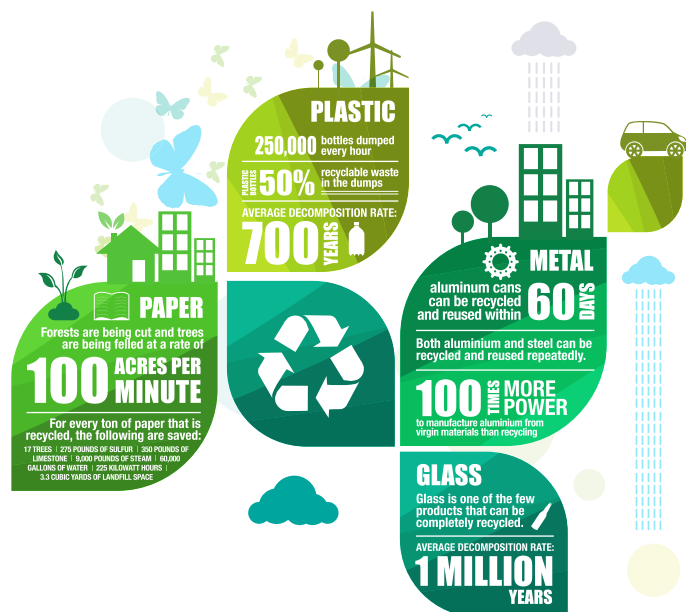


## *Waste Management Services*

Information Catalogue

# Contents

WHO ARE WE	01
B-BBEE LEVEL 2	01
GOAL   VISION   MISSION   VALUES	02
BUSINESS MODEL	03
NATIONAL FOOTPRINT	04
ON-SITE SOLUTIONS	05
WASTE SHED DESIGN	06
WEB PORTAL RECORDING AND REPORTING	07
ESG & SUSTAINABILITY ROADMAP	07
VALUE ADDED PRODUCTS	08
VALUE ADDED SERVICES	10





### CHOOSING THE RIGHT WASTE MANAGEMENT PARTNER

Choosing the right accredited partner can be a mine-field - is the waste getting disposed of as it should be! If disposing of waste in an environmentally - friendly manner is crucial to your business. We can help.

Our experts will assess your waste streams and develop the right recycling and disposal solution for you. We'll work closely with you to customize a local recycling and waste diversion solution that cuts costs, generates revenue, safeguards health and fosters sustainability.

Let's join forces and do some good in your community.

### WASTE SOLUTION

Pandae Green Solutions (PGS) is redefining the historical methods used for the management of motor manufacturers and dealers, logistics companies, hospitals, medical and general industries by offering a unique, proactive waste collection service.

PGS designs an optimal waste area for your business and supplies all equipment required on-site - from waste stands, mini steel skips, sorting tables, bulk storage racking – to name only a few products.

PGS puts its own trained personnel on-site to collect and sort all waste into various waste streams to be collected and disposed of by approved recyclers and waste removal companies.

**OR**

We can train your staff with our digital training App and facilitate all waste collections, collection of weighbridge certification or hazardous manifests and finally collect your rebate and pay it over to you.

As part of any Service Level Agreement, PGS also provides an auditable monthly Management Report on the volumes of waste collected from all business sources, ensuring full compliance with the law.

While PGS can positively assist your business to achieve the above results in a financially favourable way, we are also able to design an extensive ESG Plan to ensure your KPI's are met and waste sustainability programmes are implemented and monitored.



The executive management of PGS realized that their tried and tested waste management solution must adopt the latest B-BBEE codes of good practice, and as such PGS has empowered our Black Management team and formed a Pandae Trust to take up the waste management opportunities existing in the sectors in which we currently conduct business.

The various companies have been established to be this vehicle, with the trust owning 51% of the shares.

PGS and these independently registered companies subscribes to the principles of government's National Development Plan and understands the importance of transformation within industrial and service sectors. As such, PGS is a B-BBEE Level 2 certified

company with a long-term BEE strategy to ensure future compliance.

The B-BBEE status of these companies, as a service provider to our customers, delivers the following distinct advantages:

- **Year One: All payments can be claimed for Enterprise Development for your B-BBEE scorecard.**
- **Year Two & Three: All payments can be claimed for Preferential Procurement for your B-BBEE scorecard.**



## OUR GOAL



## OUR VALUES



## OUR VISION

To provide our customers with a world class on-site Waste Management Solution that supports the efforts of our customers.

## OUR MISSION

- To only work with reputable and sustainable recycling partners.
- To continue to identify and establish new and innovative programs that will add value to our customers.
- To continually train and develop our **TEAM** to adhere to industry leading standards.

## 8 FACTS ABOUT PANDAE GREEN SOLUTIONS

*We are a majority Black owned company and we're Level 2 B-BBEE compliant.*

Partnering with us offers clients a seamless and holistic solution for efficient waste management. Information is captured and easily available via an online portal. Sorting staff are properly trained and remunerated to comply with labour law. We also audit and assess our waste collection partners to ensure that they adhere to the highest standards in the market. All waste partners are managed on our clients' behalf.

- 1 Our Business Intelligence platform delivers accurate information and actionable data at your fingertips.
- 2 We record and report your waste - we have an online waste portal.
- 3 We are ISO 9001, ISO 14001 & ISO 45001 certified.
- 4 We are NOT in the business of moving skips to landfill.
- 5 You can use our sorters or we can train your staff – Training Academy.
- 6 We pay you your waste rebates - 30 days after month end.
- 7 We formally manage our weekly site visits by our Field Managers and send our customers a formal weekly report of the activity that took place.
- 8 We have a comprehensive OHS file - issued per site.



## OVERALL PROPOSITION: ON-SITE WASTE MANAGEMENT SOLUTION

### Management Fee

- Business Intelligence platform delivers accurate information and actionable data at your fingertips.
- Manage and Record Waste Management meetings
- Field Manager - Weekly Management Report
- Digital Waste Training Academy for all sorters and supervisors
- SHEQ Officer Audits
- ISO Certification 9001, 14001 & 45001
- Stationery & Digitisation
- All waste partner's licenses are verified and service level agreements put in place
- Environmental Social Governance (ESG) and sustainability plan developed, taking into account your companies specific KPI's and goals are achieved and monitored

### On-Site Operations

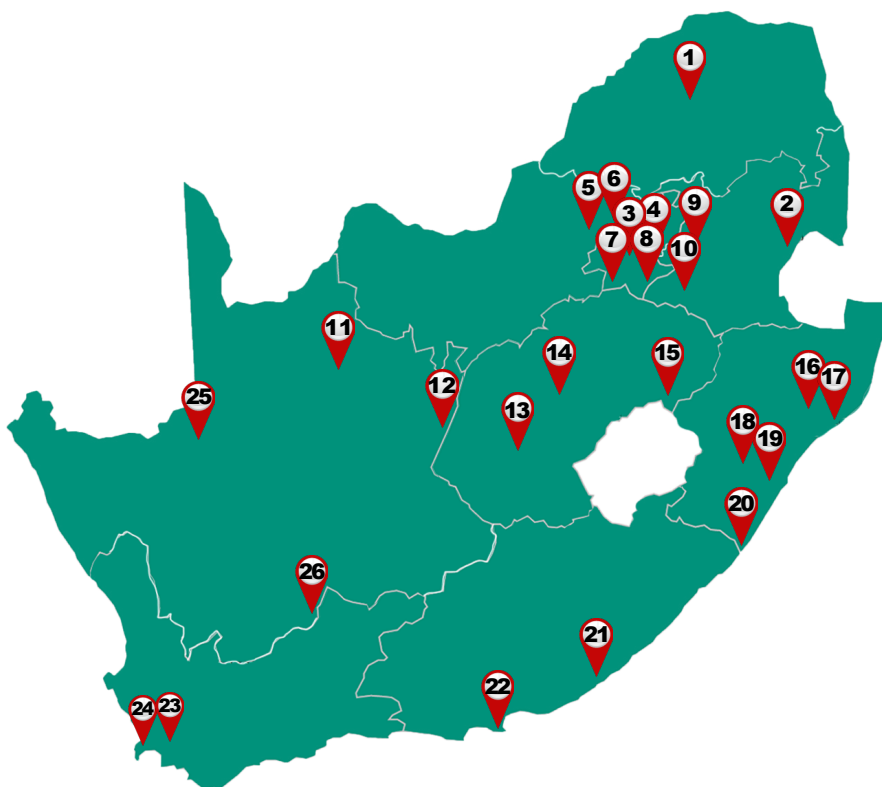
- Labour
- On-site collection of waste
- Sorting of waste streams
- Sending off of various waste streams
- PPE & PPC
- HR

### Waste Administration

- Pandae monitors every service, completed every day.
- Sorter places waste collection directly with specified waste partner via App.
- Admin Assistant follows up each collection not collected in agreed time frames (Portal)
- Pandae and transporter/waste partner's digital collection notes are uploaded onto portal in real time.
- Admin Assistant captures weigh bridge and manifest certification.
- Debtor and credit assistant - pay waste partners where necessary and collect rebates
- Financial Manager - pays rebates and manages financial department
- Admin Manager manages administrative assistants and oversees daily collections, and all administrative tasks are completed
- Records are kept for 5 years

## CERTIFICATIONS





- |                  |                      |                  |                    |
|------------------|----------------------|------------------|--------------------|
| 1. Mokopane      | 2. Nelspruit         | 3. Johannesburg  | 4. Pretoria        |
| 5. Rustenburg    | 6. Brits             | 7. Vereeniging   | 8. Heidelberg      |
| 9. Middelburg    | 10. Witbank          | 11. Kathu        | 12. Kimberley      |
| 13. Bloemfontein | 14. Welkom           | 15. Harrismith   | 16. Empangeni      |
| 17. Richards Bay | 18. Pietermaritzburg | 19. Durban       | 20. Port Shepstone |
| 21. East London  | 22. Port Elizabeth   | 23. Stellenbosch | 24. Cape Town      |
| 25. Upington     | 26. Beaufort West    |                  |                    |

**SOME OF OUR CLIENTS**



Mercedes-Benz



TOYOTA

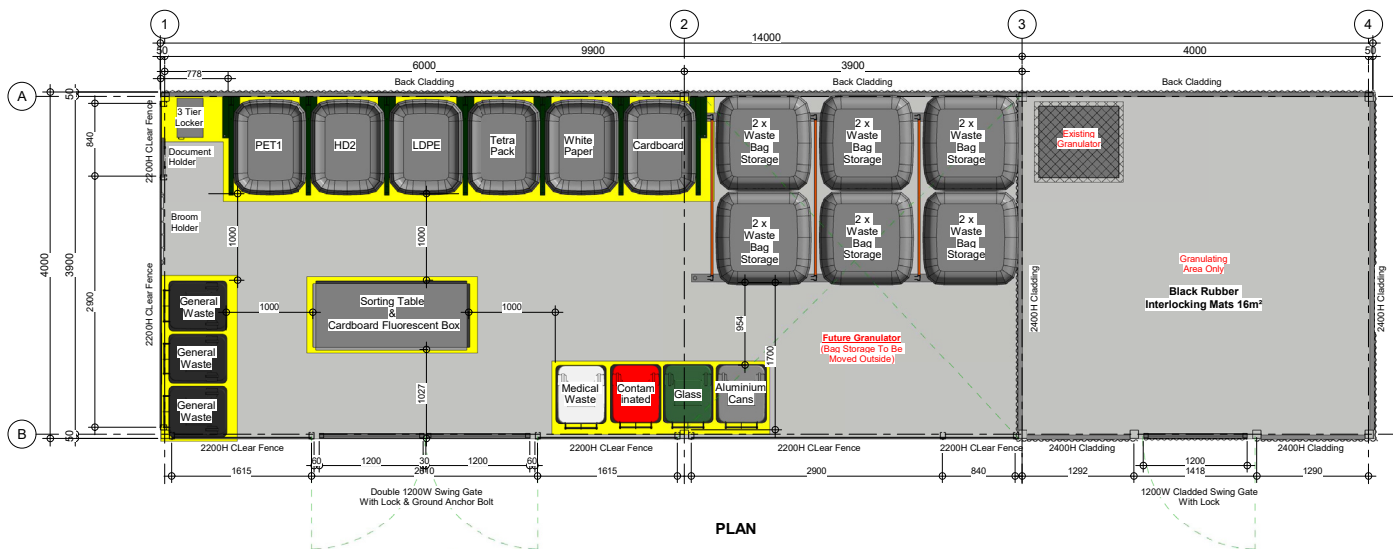




# ON-SITE SOLUTIONS

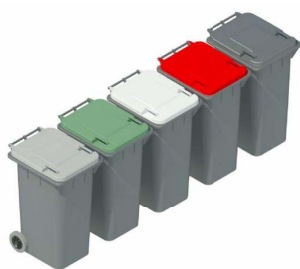


# WASTE SHED DESIGN

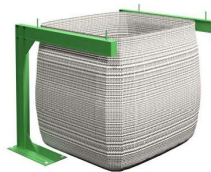


## 14m x 4m Shed - 56m<sup>2</sup>

Brick Pave Flooring Existing, Rubber Interlocking Mats required 16m<sup>2</sup>  
 Fencing Required, Roof Required, Paint Required, Yellow Floor Paint 13m<sup>2</sup> Grey Floor Paint 43m<sup>2</sup>



Wheelie Bin  
(Assorted Colours)  
240 Ltr



Bag Stands &  
Bag Arms



Bag Storage Rack Support  
1500D x 1800W x 2100H



3 Tier Locker  
450mmD x 300mmW x  
1800mmH



Sorting Table  
800mmW x 1800mmD



Fluorescent  
Reinforced Cardboard Box  
330mmD x 1640mmW x 330mmH



Document Holder  
Perfo Beam  
20D x 450W x 80H  
2 Levels  
with Clips



Sanitizer Backpack  
Sprayer  
15 Ltr

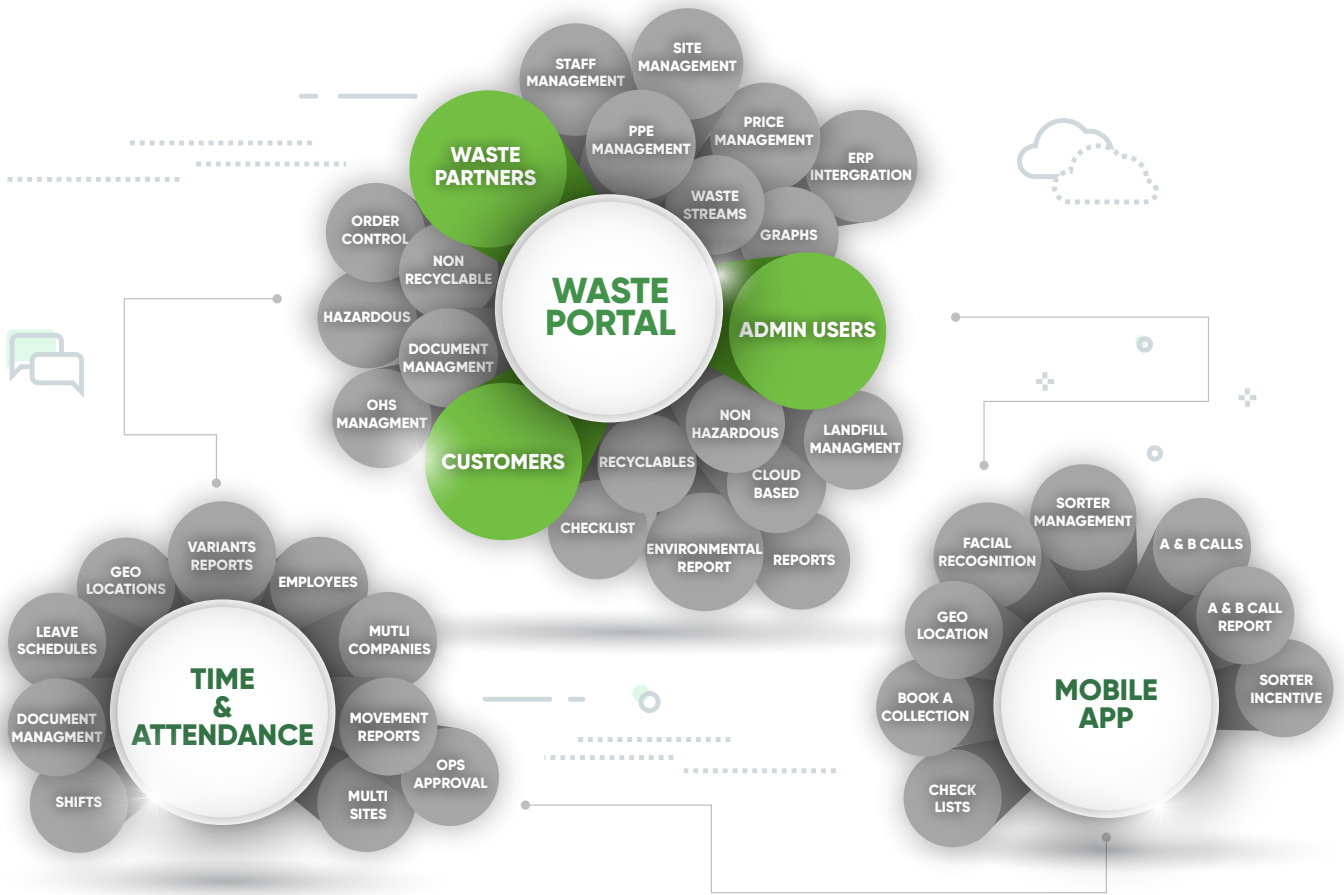


Wall Mounted Broom  
Holder





## WEB PORTAL RECORDING AND REPORTING



## ESG & SUSTAINABILITY ROADMAP

- Develop an Environmental sustainability plan for your business, short and long term.
- Measure all Landfill Waste by waste stream.
- Design a strategy and plan accordingly to achieve “Zero Waste to Landfill”
- Reduce, Re-use and Recycle
- Circular Economy/Business principles to be incorporated to your KPI’s.
- Profitability to be considered using the ESG scorecard.



# VALUE ADDED PRODUCTS



*Diamond Arrow Award 2019, 2020, 2020 and 2021 - 1<sup>st</sup> place for Outstanding Waste Management Equipment*



SPILL KIT



COVID 19 BINS



INDUSTRIAL SCALES



HUSQVARNA 15 LITRE BACKPACK SPRAYER

WASTE COLLECTION BINS



WHEELIE BINS

VALUE ADDED PRODUCTS



OFFICE BINS



PLATFORM TROLLEY  
*Heavy Duty*

ANTI-FREEZE & BRAKE  
FLUID WASTE DRUM



LOCKABLE DRUM



PLATFORM TROLLEY  
*Light Duty*



SORTING TABLE



VICE  
150mm



VICE STAND

LOCKER 3 TIER LOCKABLE



BAG STAND





**HAZARDOUS WASTE DISPOSAL**



**FLUORESCENT TUBE RECYCLING**



**PEST CONTROL**



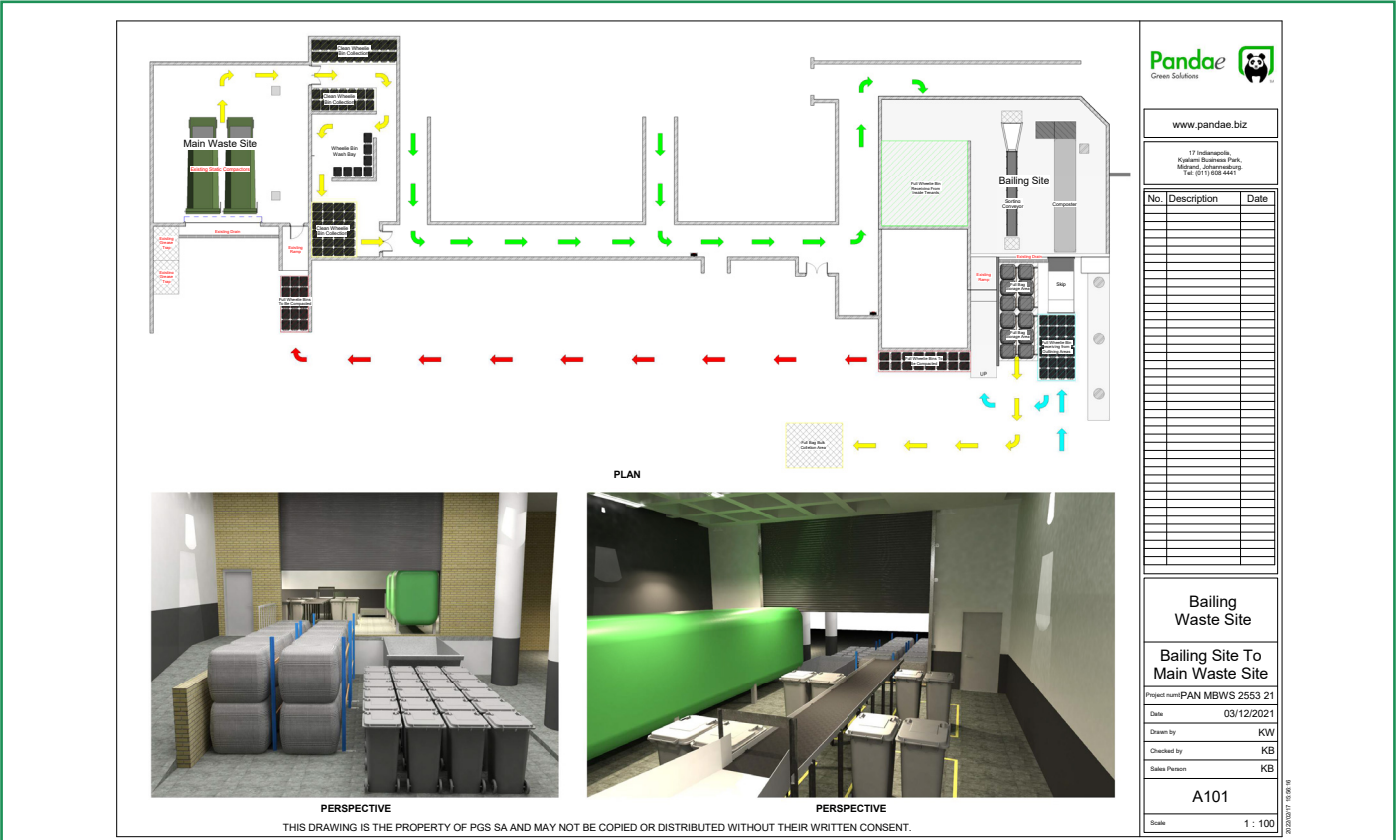
**RECYCLING OF USED OIL, RAGS AND FILTERS**



**E-WASTE: ASSETS VALUE RECOVERY**



**ENTERPRISE DEVELOPMENT PARTNERSHIP**



## WASTE AREA AND PROCESS FLOW DESIGN



**SOIL REHABILITATION**



**MEDICAL WASTE DISPOSAL**



REDUNDANT STOCK DISPOSAL



FOOD WASTE COMPOSTING



SHREDDING



CERTIFIED DESTRUCTION



COVID19 DISPOSAL PRODUCTS



SLUDGE REMOVAL

## HEAD OFFICE



## WASTE MANAGEMENT SITE



## NOTES:

---

---

---

---

---

---

---

---

